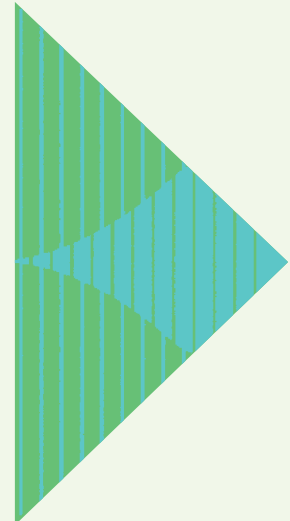


IMPERGEN FLEX TUBE IFT

Tech. Sh. IMP18

Hydroswelling LINE



Sealing system for post-injection of cold and construction joints in concrete

Description

Impergen Flex Tube IFT is a preventative injection hose for the permanent sealing of cold and construction joints in concrete, pipe penetrations and voids between walls and slabs.

Uses

Sealing of cold and construction joints, pipe penetrations, joints between slurry walls and slabs through post-injection of the hose with Impergen hydroreactive resin.

Advantages

The system allows injection under relatively low pressure.

Concrete will not be damaged during installation and injection.

Permanent seal after injection.

In case of no leakage, injection is not necessary.

Injection can be performed at any time, when concrete is well cured and hardened.

The pressure of the resin remains stable and uniform along the hose.

Installation of Impergen Flex Tube IFT is easy, simple and safe with the kit.

The hose can be adapted on site to the exact length of the construction joint (recommended maximum length is 6 meters).

Technical data

A spiral shaped injection hose, porous over its entire length, with an outside diameter of 12 mm.

Outside diameter	12 mm
Inside diameter	8 mm
Hose length max.	6 meters
Steel wire tensile strength	1900 N/mm ²
Filter pore diameter	34 µm
Operating temperature	< 75°C

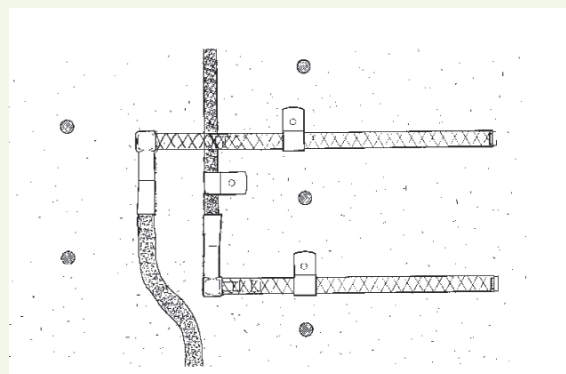
A reinforced spiral of steel wire on the inside prevents collapse of the hose and hence blockage of the injection channel. A non-woven filtrating membrane filters even the smallest cement particles during the pour. It allows free flow of the resin during injection of the hose.

External synthetic membrane protects the inner membrane. In the injection process the grout penetrates easy into the voids and honeycombs in the concrete, throughout the full length of the hose.

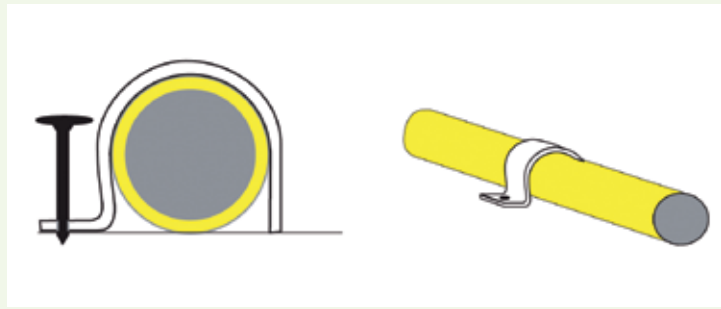
Instruction for installation

Impergen Flex Tube IFT will be installed onto the hardened concrete during formwork installation.

In case of rough surfaces, for better result, apply Idroswell mastic previously. Cut the hose to the required length (recommended maximum length is 6 meters).



The ends need to be smooth down by means of a twisting motion. The trumpets are slid over the Impergen Flex Tube IFT and screwed down to the stop mark inside the trumpet. The PVC tubes open ends are sealed with a plastic cap. The hose is attached to the concrete with the anchoring clips between the inner and outer reinforcing bars.



Nail the anchoring clips down with steel nails every 25-30 cm. Overlapping will be made according with the installation drawing. The hose can also be attached directly to the reinforcement bars with steel wire. The PVC end pieces need to protrude out of the concrete at places, which are easily visible and accessible after demoulding at the inside of the construction and to allow continuous injection. The ports can be attached to the formwork with formholders. These can be either nailed to the formwork or attached to the reinforcement bars with steel wire.

For better installation, at the time of concrete pouring, level out a strip of 2 to 3 cm with a trowel. Impergen Flex Tube IFT must be installed in direct contact with the joint over its full length.

The injection with Impergen hydroreactive resin will follow at any time, if necessary, and according with the Impergen resin instructions. In case of injection the concrete has to be cured and hardened.

The necessary quantities of Impergen resin need to be estimated on site and depend on the length, design of the various joints, voids and joints opening which needs to be filled.

Minimum fill resin volume of the correctly installed injection hose: 250-300 g/m.

Packaging

Impergen Flex Tube IFT is supplied in non-assembled kits of 30 m to allow the system to be adapted to the required length on site. Kit contents:

Hose length	30 m
Reinforced PVC tube	2,50 m
Trumpets	10 pieces
Anchoring clips	100 pieces
1 Pallet = 40 kits = 1.200 m.	

Components can be sold separately on request.

Storage

Unlimited shelf life of Impergen Flex Tube IFT. Keep in a dry place.

For complete information please consult the SDS.



Head Office

Via Retrone,39 - 36077 Altavilla Vicentina (Vicenza) - Italy

tel +39.0444.522797- fax +39.0444.348692

info@gpintech.com

www.english.gpintech.com

Copyright 2011 - All rights reserved

"This technical sheet is provided solely as an aid in determining correct preparation, installation requirements and installation procedures. This brochure is not intended to establish product recommendations for any installation, outside G&P intech control of using. To the best of our knowledge the information contained herein is true and accurate at the time of issuance, but is subject to change without prior notice. It is also the buyer's responsibility to determine whether G&P intech products are appropriate for the buyers' intended use. Contact G&P intech to verify correctness of any data and applications not address herein."

Rev. Tech. Sh. IMP18/01/11